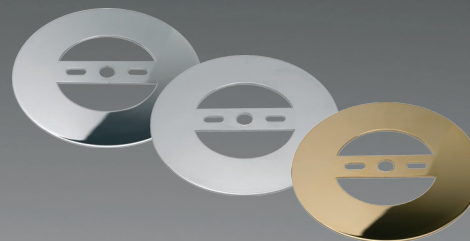




LED R1-2



cover-ring

LED R1-2

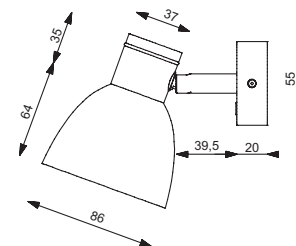
- stufenlos über den integrierten Softtaster dimmbar
- mit Memory Funktion
- angenehm warmweiße (3.000 K) High-Power LEDs 3 x 1 W
- dreh- und schwenkbar
- anschlussfertig für 10 - 30 Volt DC

LED R1-2

- infinitely variable dimming via the integrated Soft switch
- with memory function
- pleasant warm white (3.000 K) High-Power LEDs 3 x 1 W
- pivoted and rotatable
- ready for 10 - 30 Volt DC

LED R1-2

200 143 05	CG	WH
200 143 07	CM	WH
200 143 09	GG	WH
200 243 05	CG	SW
200 243 07	CM	SW
200 243 09	GG	SW



Abdeckring / Coverring Ø92 mm

- zum Abdecken alter Schraubenlöcher
- for covering old screw holes

500 024 05	CG
500 024 07	CM
500 024 09	GG