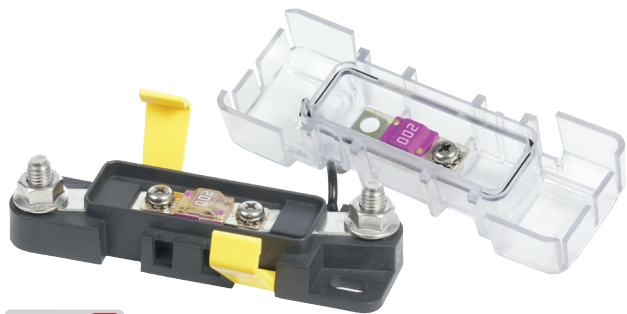


Safety Fuse Block AMI® or MIDI®

Ignition protected for use on gasoline powered boats with 30A to 200A circuits



- Sealed cover protects fuses from the harsh marine environment and satisfies ABYC/USCG insulation requirements
- Cover breakouts allow wire access in three directions
- Cover accommodates a spare fuse
- One-piece stainless flange nuts ensure safe and secure connections
- Accepts square format standard or custom label
- Fuses sold separately (p.54)

Voltage Max. Operating	32V DC
Wire Size to Meet Rating	2/0 AWG (70 mm ²)
Mounting holes	Accept 1/4" (M6) Screws
Terminal Stud Size	M8
Terminal Screw Size (7720)	M5 Stainless Steel

Regulatory

CE marked
Meets ISO 8846 and SAE J1171 external ignition protection requirements when cover is secure
IP66 – protected against powerful water jets (see inside back cover)

PN	Fuse Type	Fuse Amperages Available
7720	AMI or MIDI	30–200A



Related Products



AMI or MIDI Fuses
p. 54

TECH tip

ABYC guidelines and Ignition Protection

Blue Sea Systems fuse blocks marked ignition protected

are designed and tested for ignition protection, enabling them to be installed in a compartment where gasoline or other explosive fumes may be present.

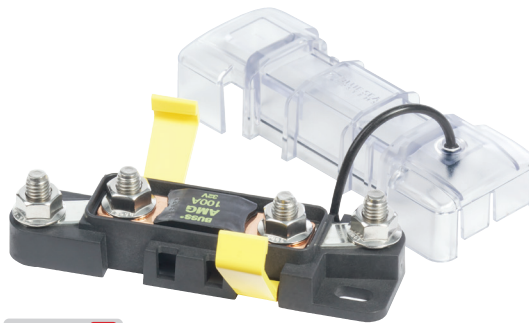
Blue Sea Systems' fuse blocks that meet the U.S. Coast Guard ignition protection requirements include the MAXI®, ST-Blade Battery Terminal Mount, ST-Blade Compact, Terminal MRBF, Class-T, Safety, and SafetyHub Fuse Blocks.

The U.S. Coast Guard states:

An electrical component that is "ignition protected" is capable of operating in an explosive environment without igniting that environment. "Ignition protection" of electrical devices is accomplished by the use of seals, flame arrestors and potting (sealing), or a combination of such means.

Safety Fuse Block MEGA® or AMG®

Ignition protected for use on gasoline powered boats with 30A to 300A circuits



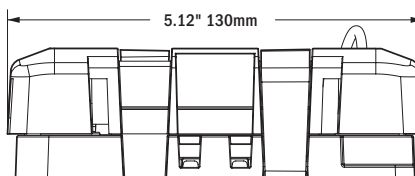
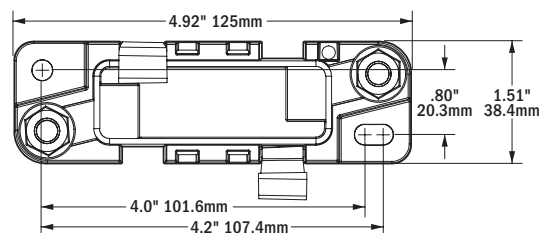
- Sealed cover protects fuses from the harsh marine environment and satisfies ABYC/USCG insulation requirements
- Cover breakouts allow wire access in three directions
- One-piece stainless flange nuts ensure safe and secure connections
- Accepts square format standard or custom label
- Fuses sold separately (p.54)

Voltage Max. Operating	32V DC
Wire Size to Meet Rating	2/0 AWG (70 mm ²)
Mounting holes	Accept 1/4" (M6) Screws
Terminal Stud Size	M8

Regulatory

CE marked
Meets ISO 8846 and SAE J1171 external ignition protection requirements when cover is secure
IP66 – protected against powerful water jets (see inside back cover)

PN	Fuse Type	Fuse Amperages Available
7721	MEGA or AMG	100–300A



Related Products



MEGA or AMG Fuses
p. 54